

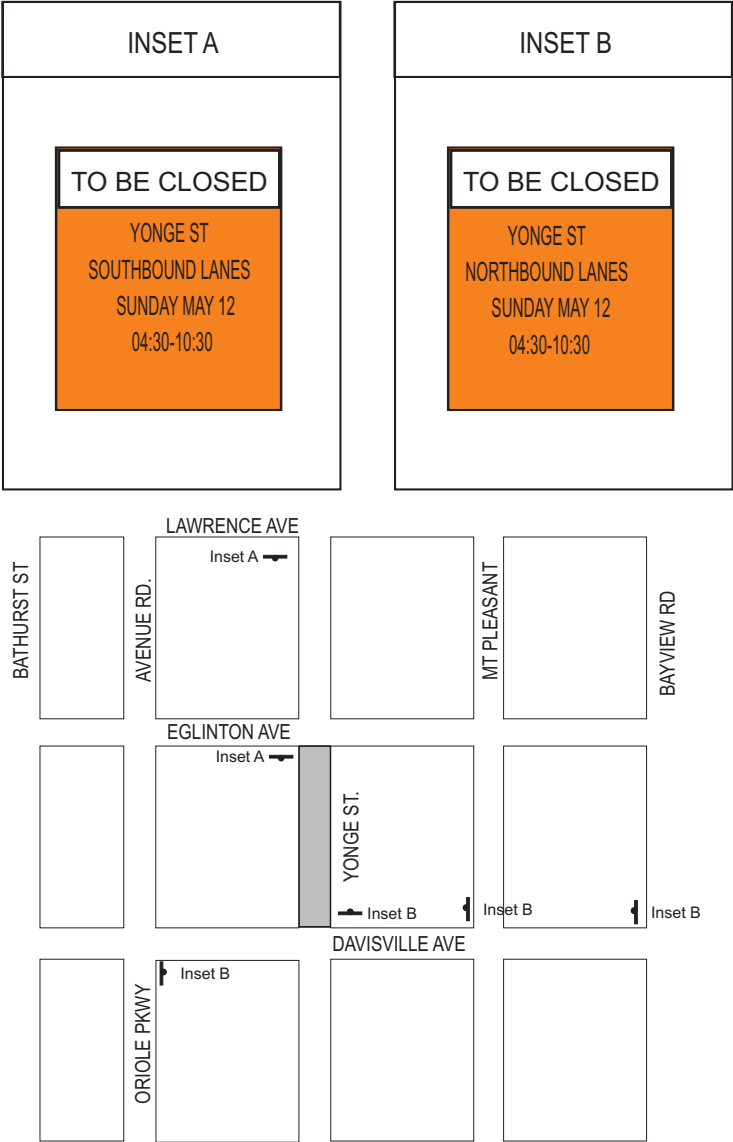


**Alternative Route with
Richmond - Adelaide Loop**

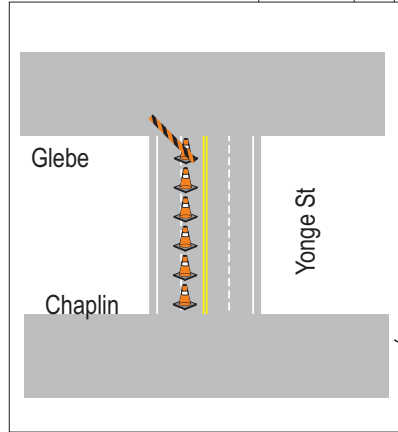
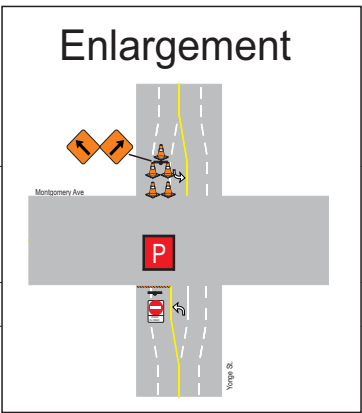
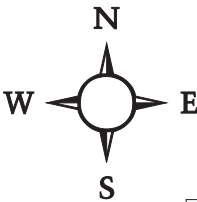
May 12, 2019

Traffic Management Plan

SPORTING LIFE 10K
Installed Monday, May 6
STAGE 1
ADVISORY SIGNAGE
YONGE STREET



SPORTING LIFE 10K
Route Map 07:15

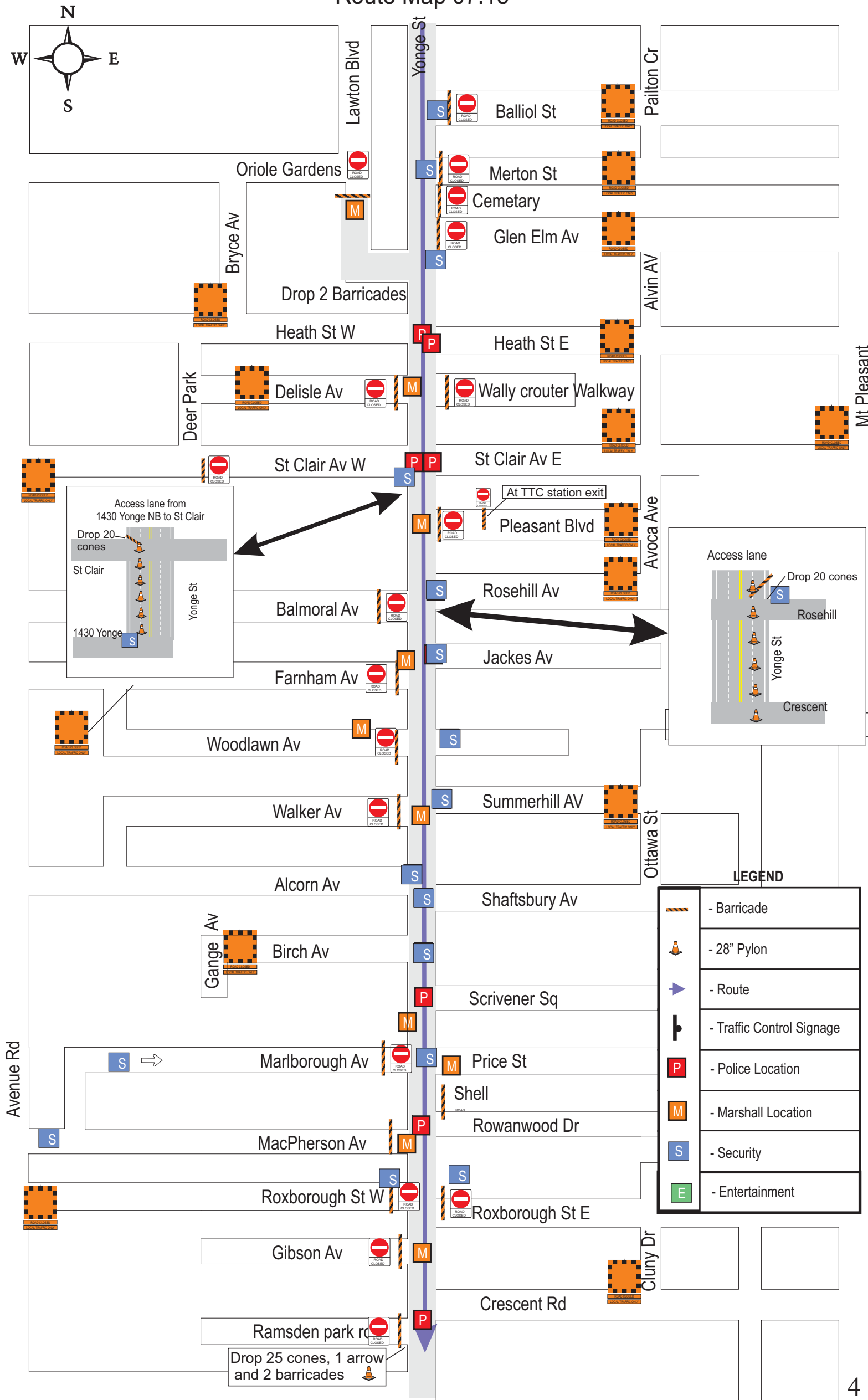


LEGEND

	- Barricade
	- 28" Pylon
	- Route
	- Traffic Control Signage
	- Police Location
	- Marshall Location
	- Security
	- Entertainment
	- Start Line

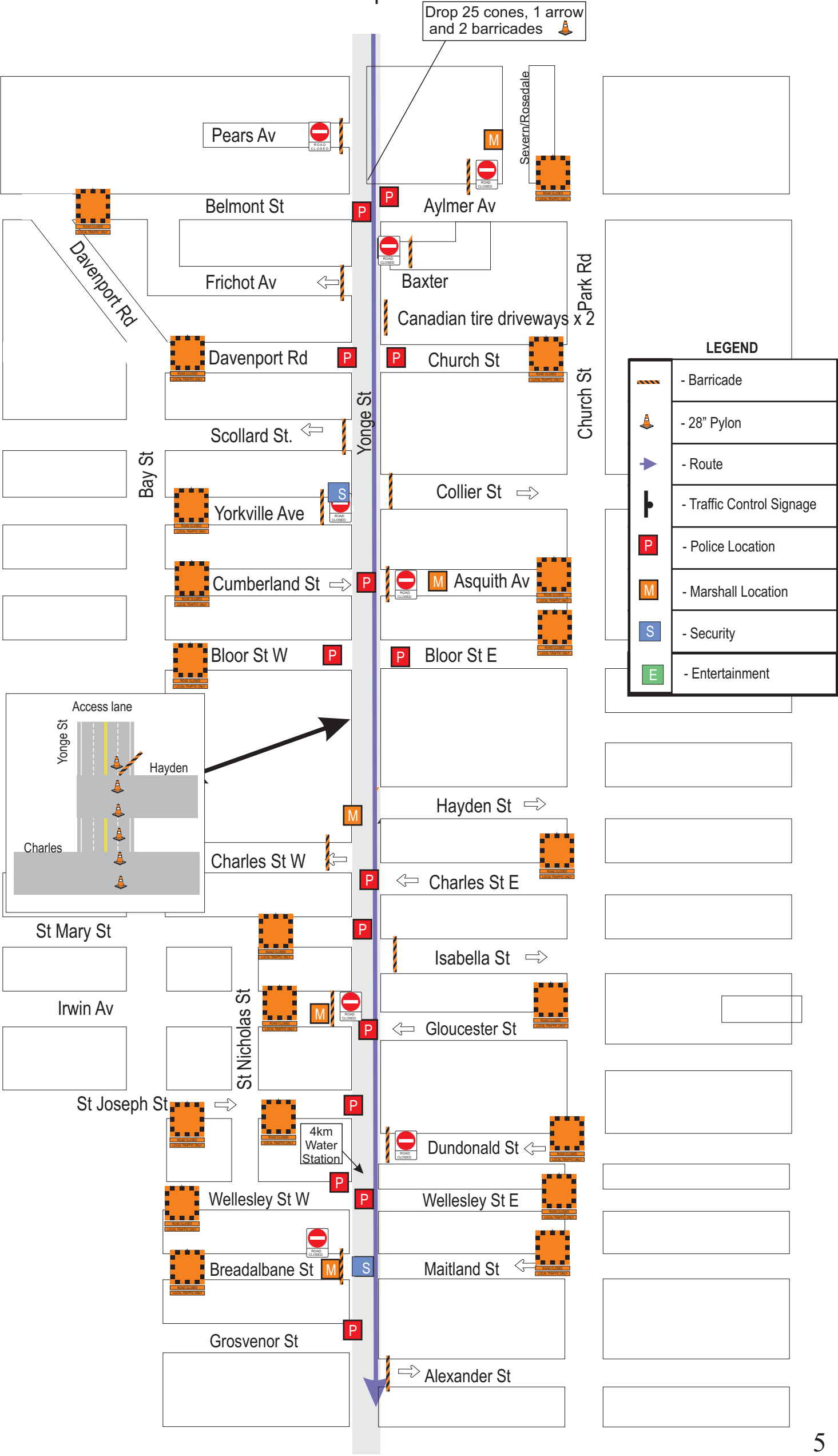


SPORTING LIFE 10K
Route Map 07:15

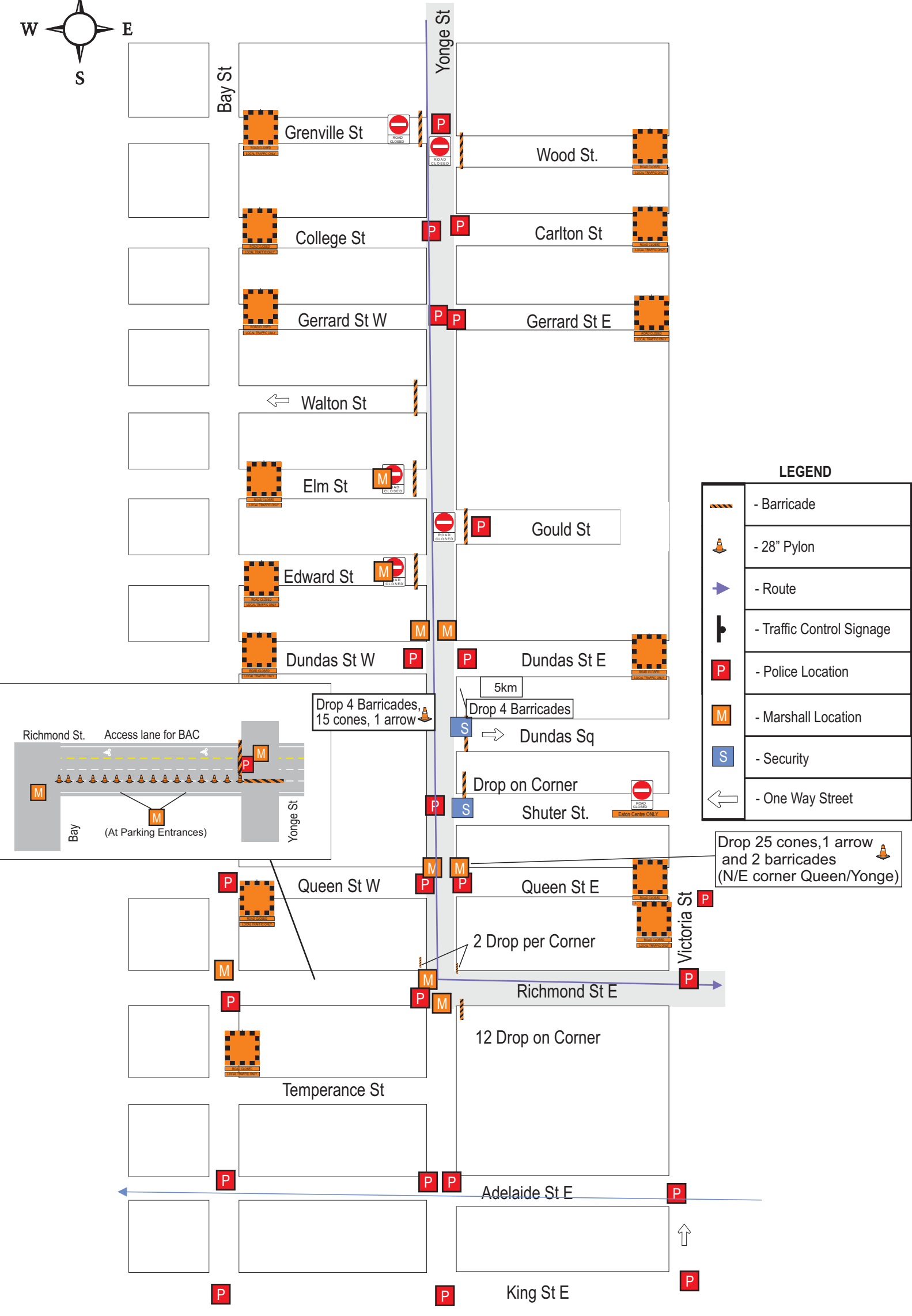
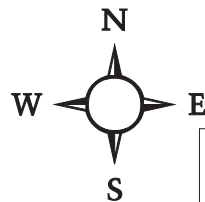


SPORTING LIFE 10K

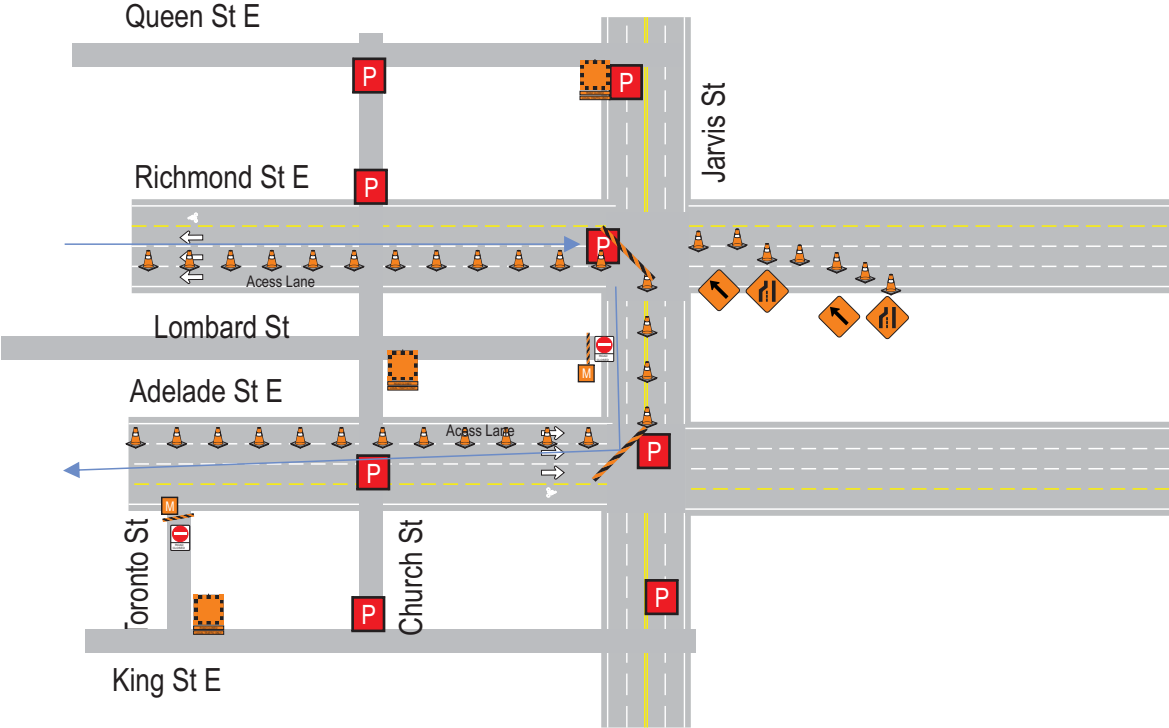
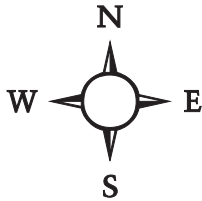
Route Map 07:15



SPORTING LIFE 10K
Route Map 07:15

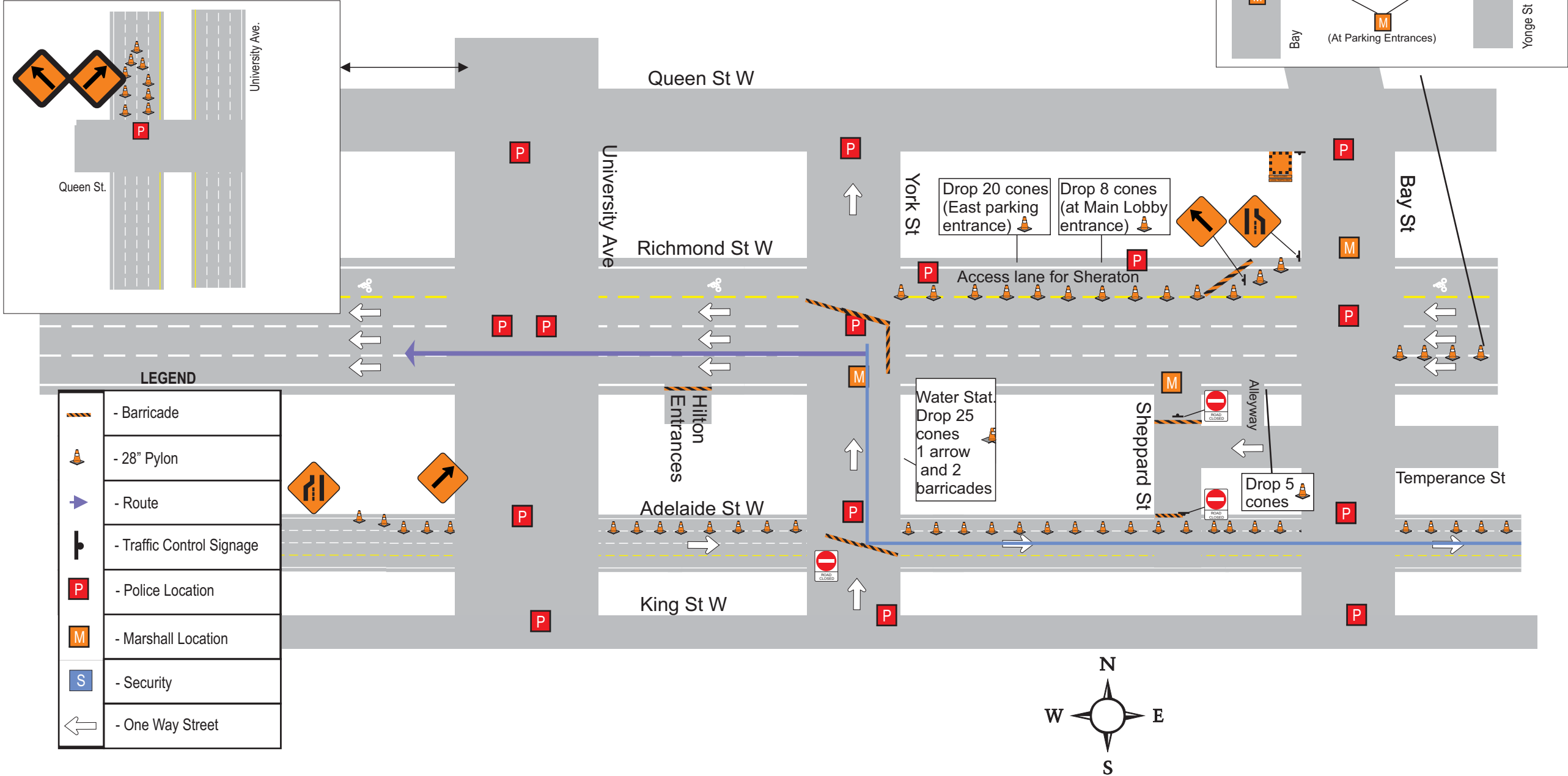


SPORTING LIFE 10K
Route Map 07:15

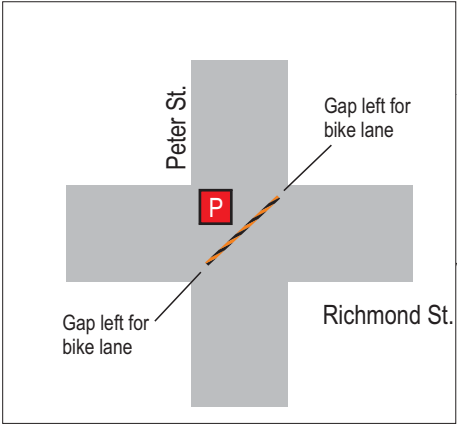


LEGEND	
	- Barricade
	- 28" Pylon
	- Route
	- Traffic Control Signage
	- Police Location
	- Marshal Location
	- Security
	- One Way Street

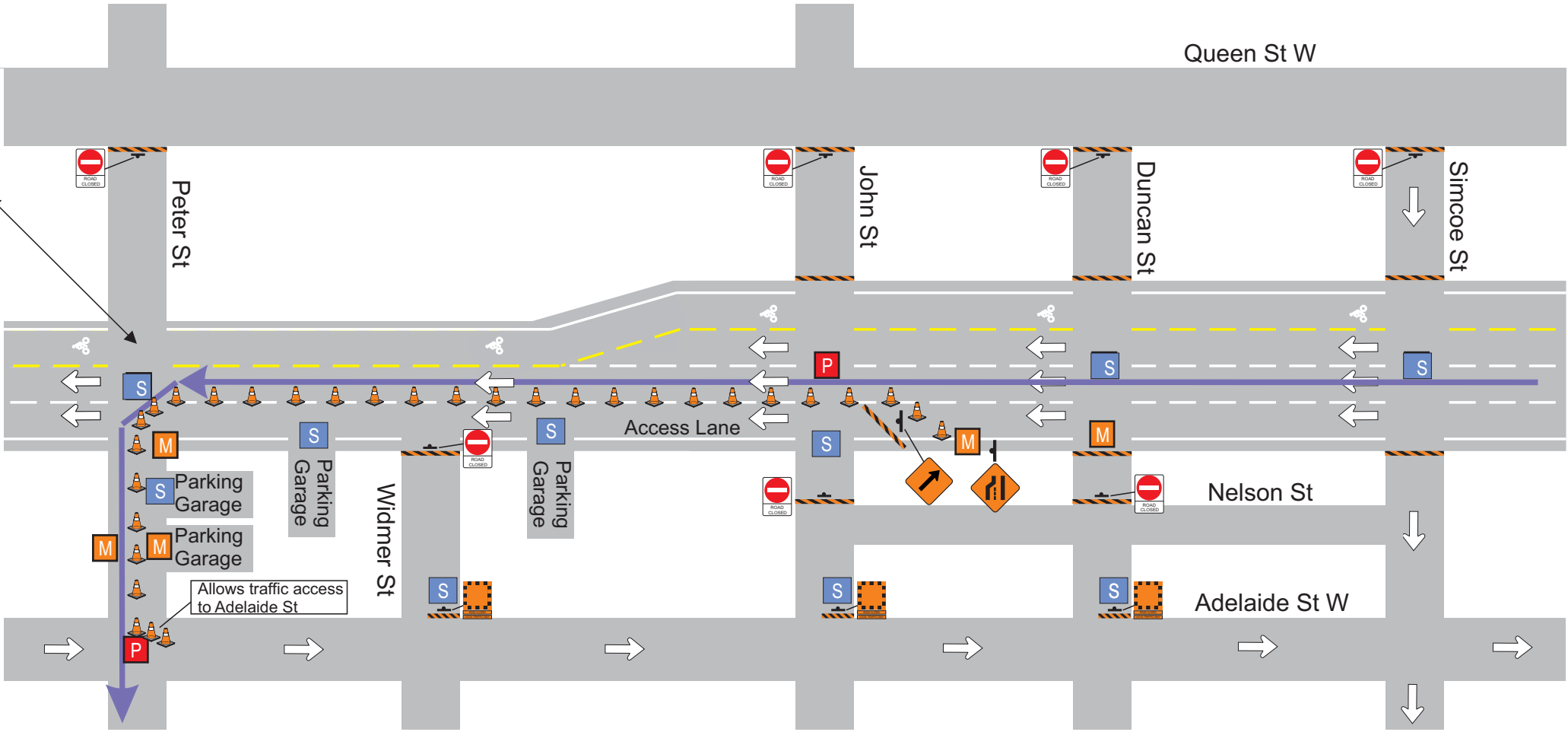
SPORTING LIFE 10K
Route Map 07:15



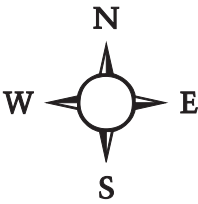
SPORTING LIFE 10K
Route Map 07:15



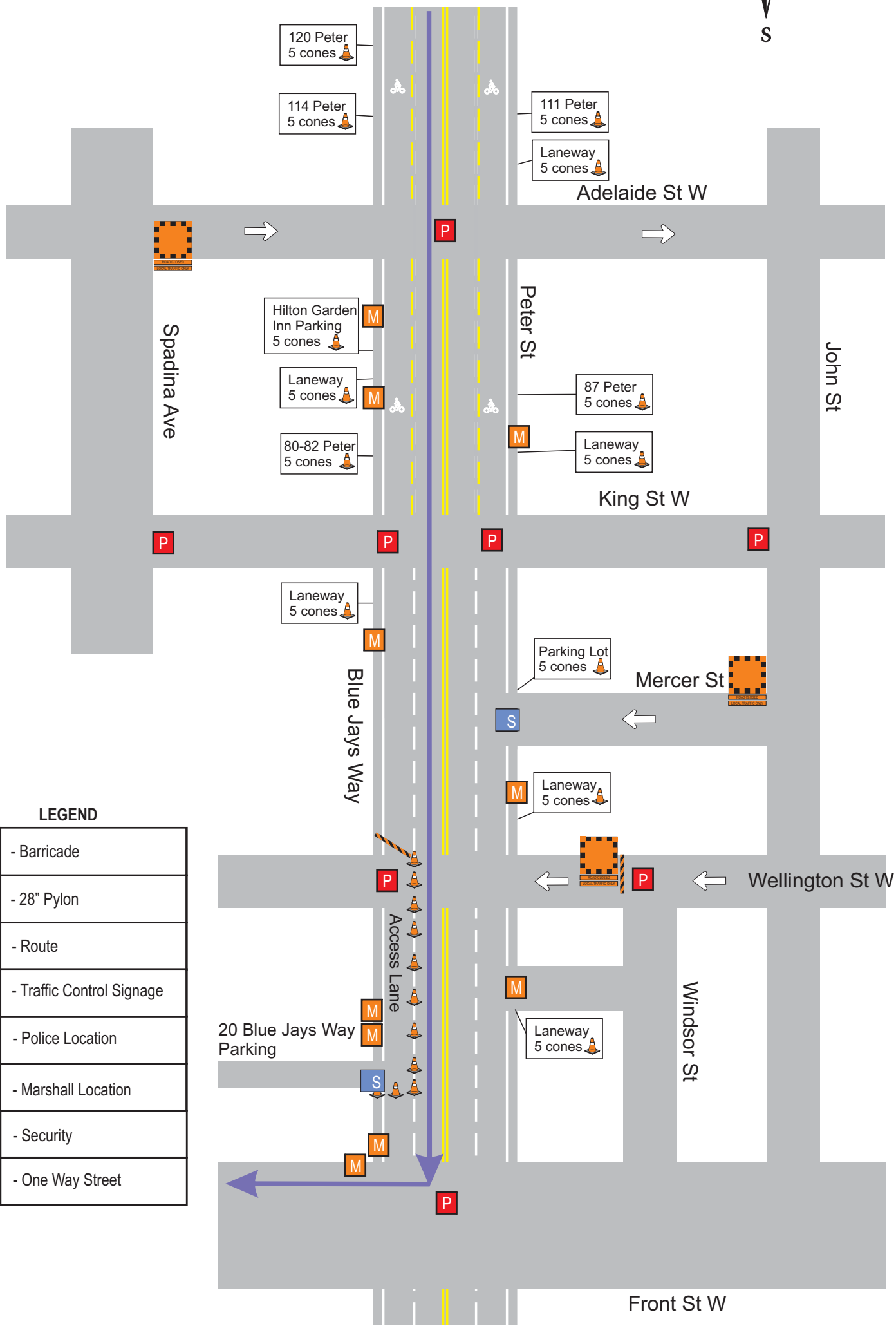
LEGEND	
	- Barricade
	- 28" Pylon
	- Route
	- Traffic Control Signage
	- Police Location
	- Marshall Location
	- Security
	- One Way Street



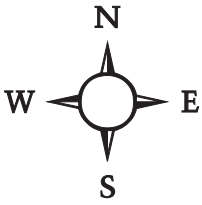
SPORTING LIFE 10K
Route Map 07:15



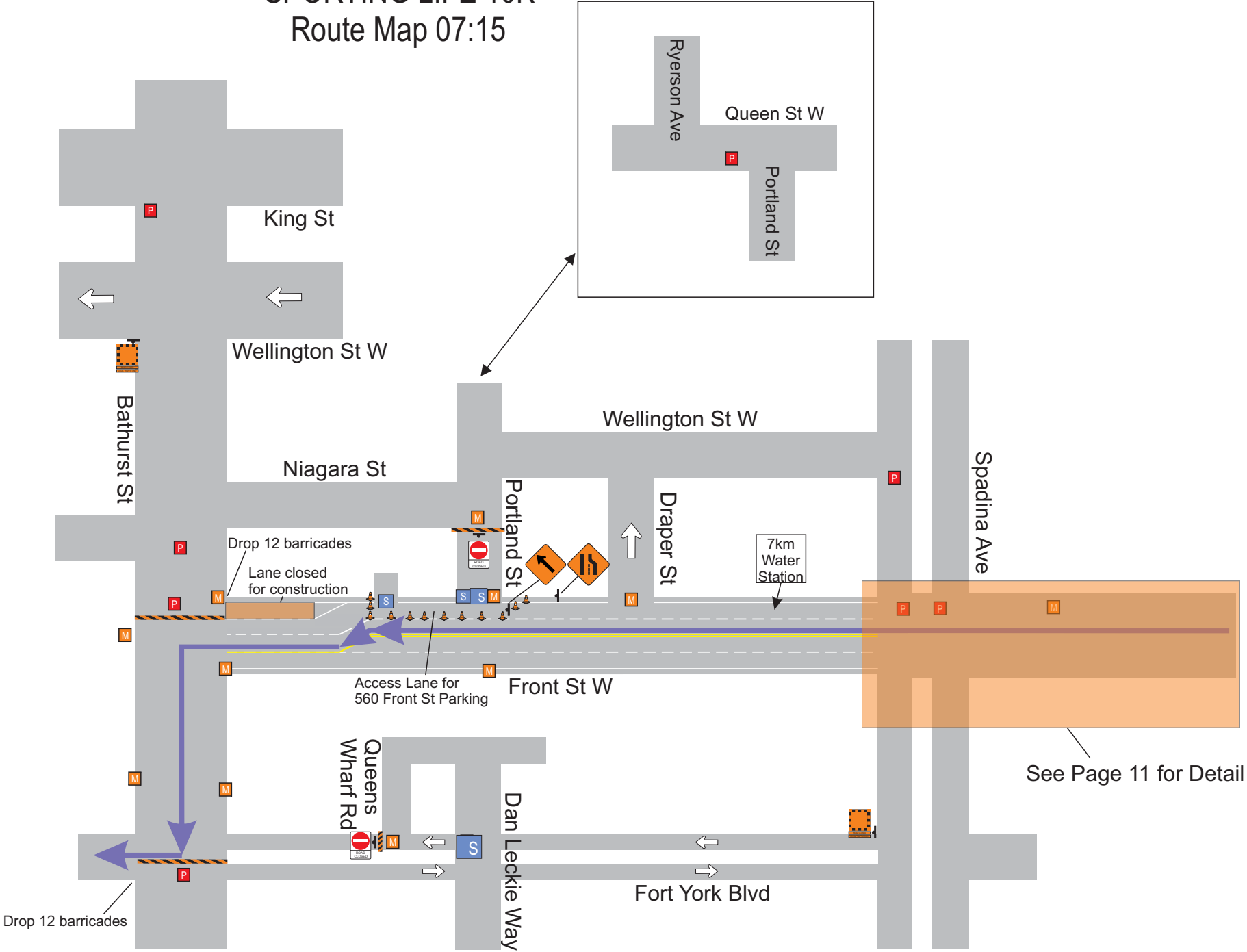
LEGEND	
	- Barricade
	- 28" Pylon
	- Route
	- Traffic Control Signage
	- Police Location
	- Marshall Location
	- Security
	- One Way Street

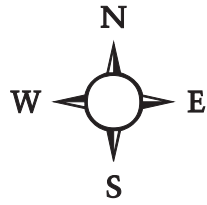


SPORTING LIFE 10K
Route Map 07:15



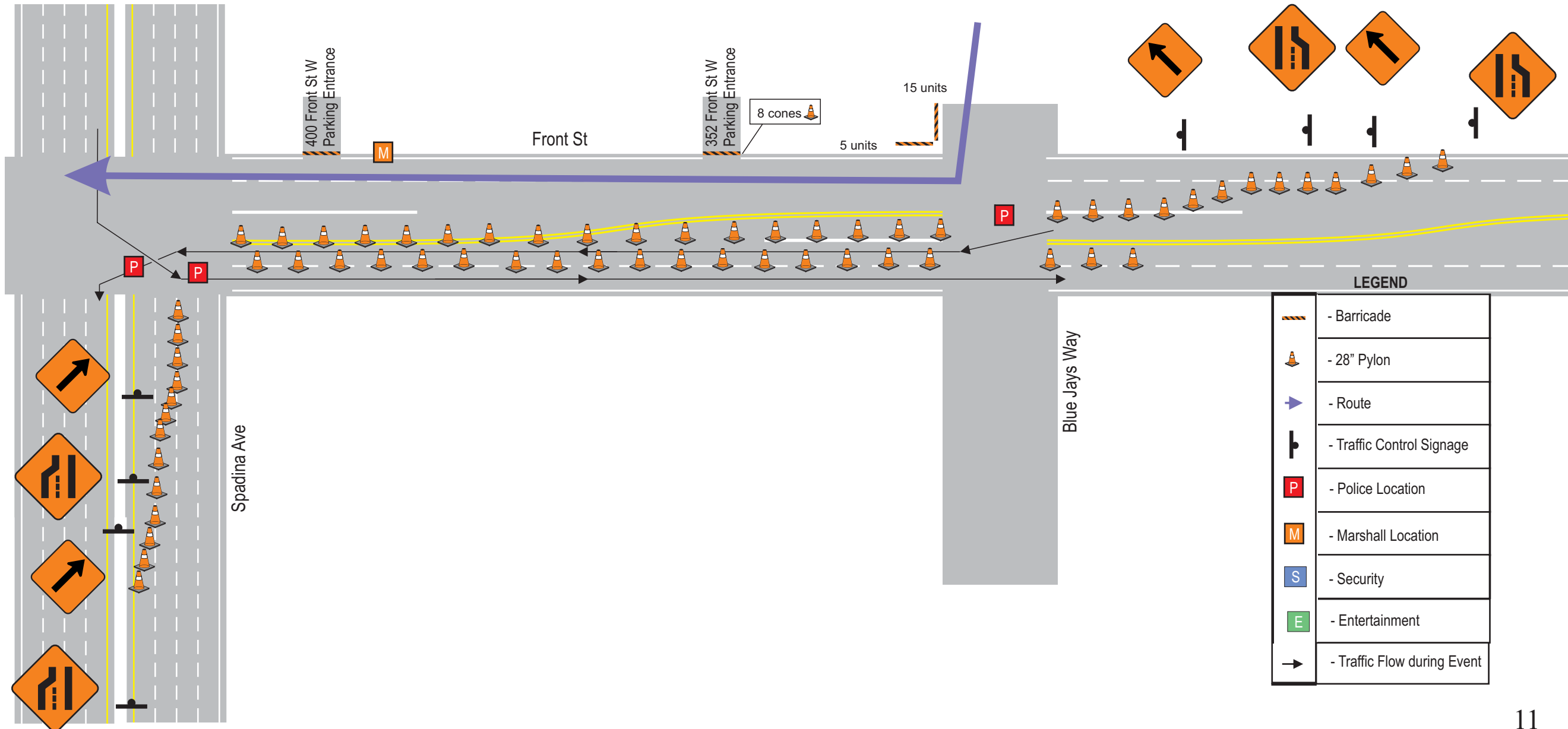
LEGEND	
	- Barricade
	- 28" Pylon
	- Route
	- Traffic Control Signage
	- Police Location
	- Marshall Location
	- Security
	- One Way Street



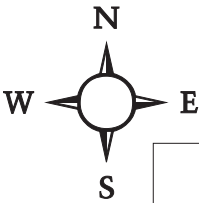


SPORTING LIFE 10K

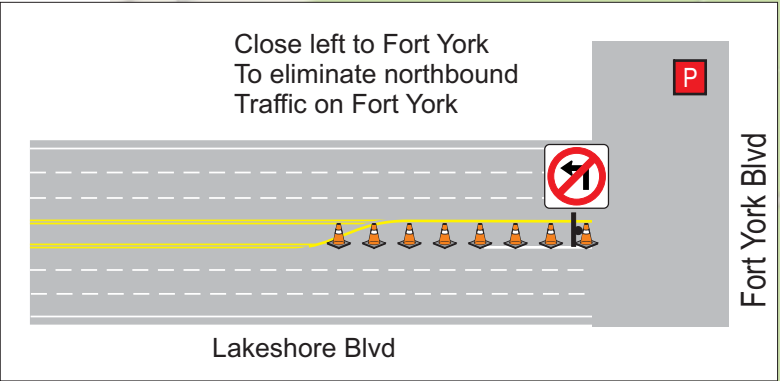
Route Map 07:15



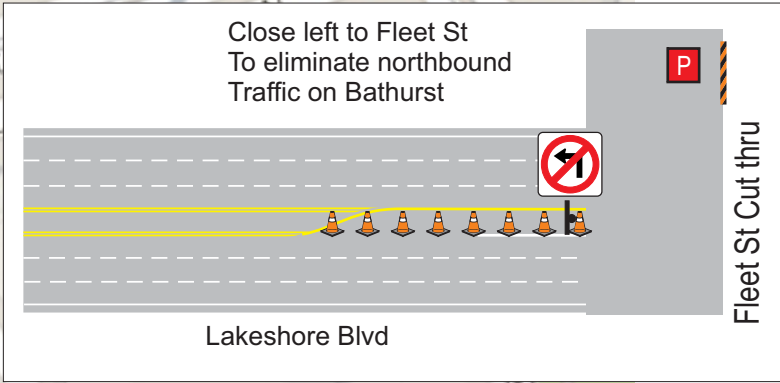
SPORTING LIFE 10K
Route Map 07:15



LEGEND	
	- Barricade
	- 28" Pylon
	- Route
	- Traffic Control Signage
	- Police Location
	- Marshall Location
	- Security
	- Entertainment

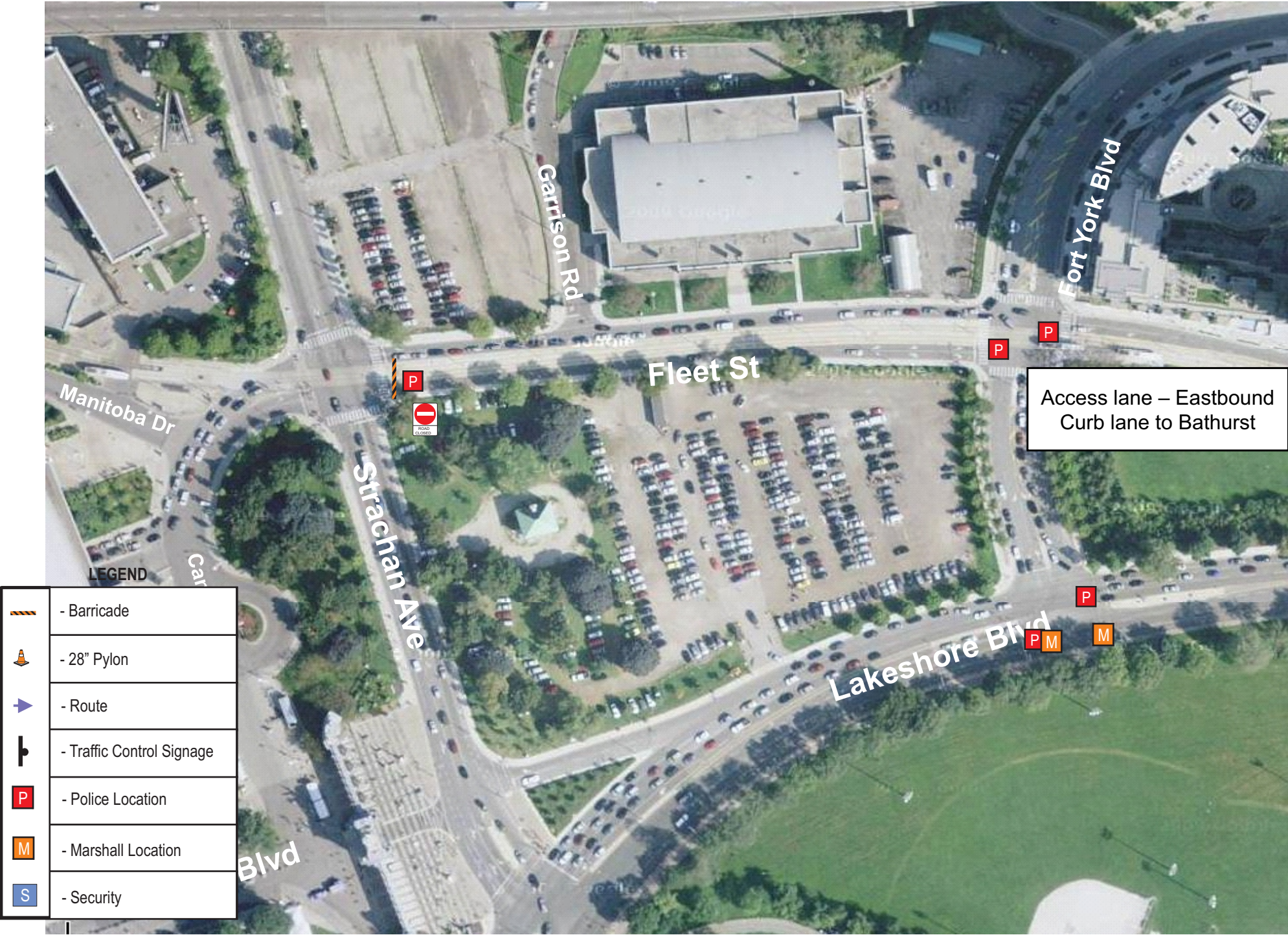


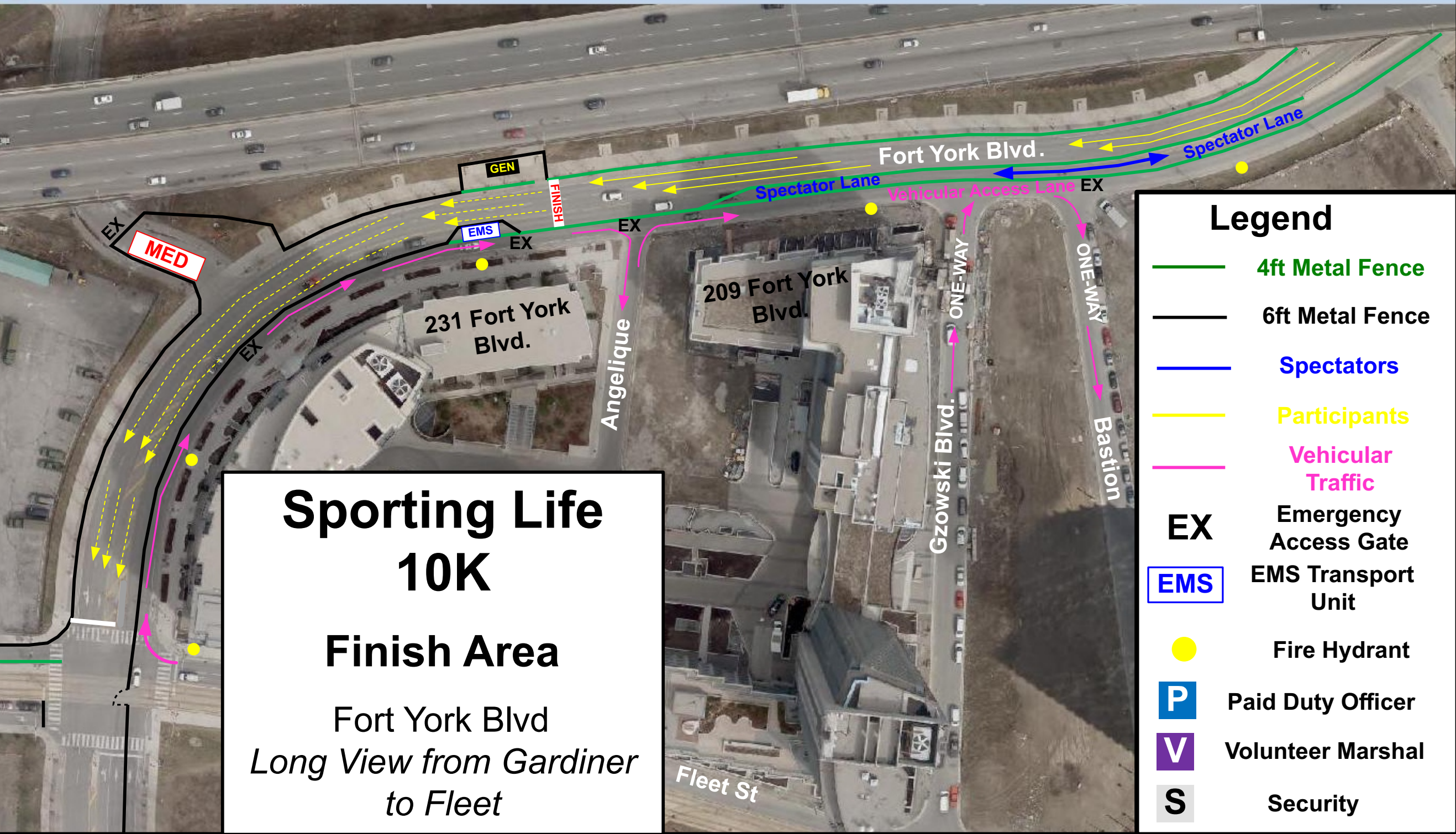
Drop 12 barricades





SPORTING LIFE 10K
Finish Line detail





Sporting Life 10K

Finish Area

Fort York Blvd
*Long View from Gardiner
to Fleet*

Legend

- 4ft Metal Fence
- 6ft Metal Fence
- Spectators
- Participants
- Vehicular Traffic
- EX Emergency Access Gate
- EMS EMS Transport Unit
- Fire Hydrant
- P Paid Duty Officer
- V Volunteer Marshal
- S Security

**Sporting Life
10K
Bathurst Bridge
Front St to
Fort York Blvd.**

Legend

— 4ft Metal Fence

— Spectators

— Participants

— Vehicular
Traffic

EX Emergency
Access Gate

▽ Type-A Traffic
Control Barricade

● 28" Traffic Cone

P Paid Duty Officer

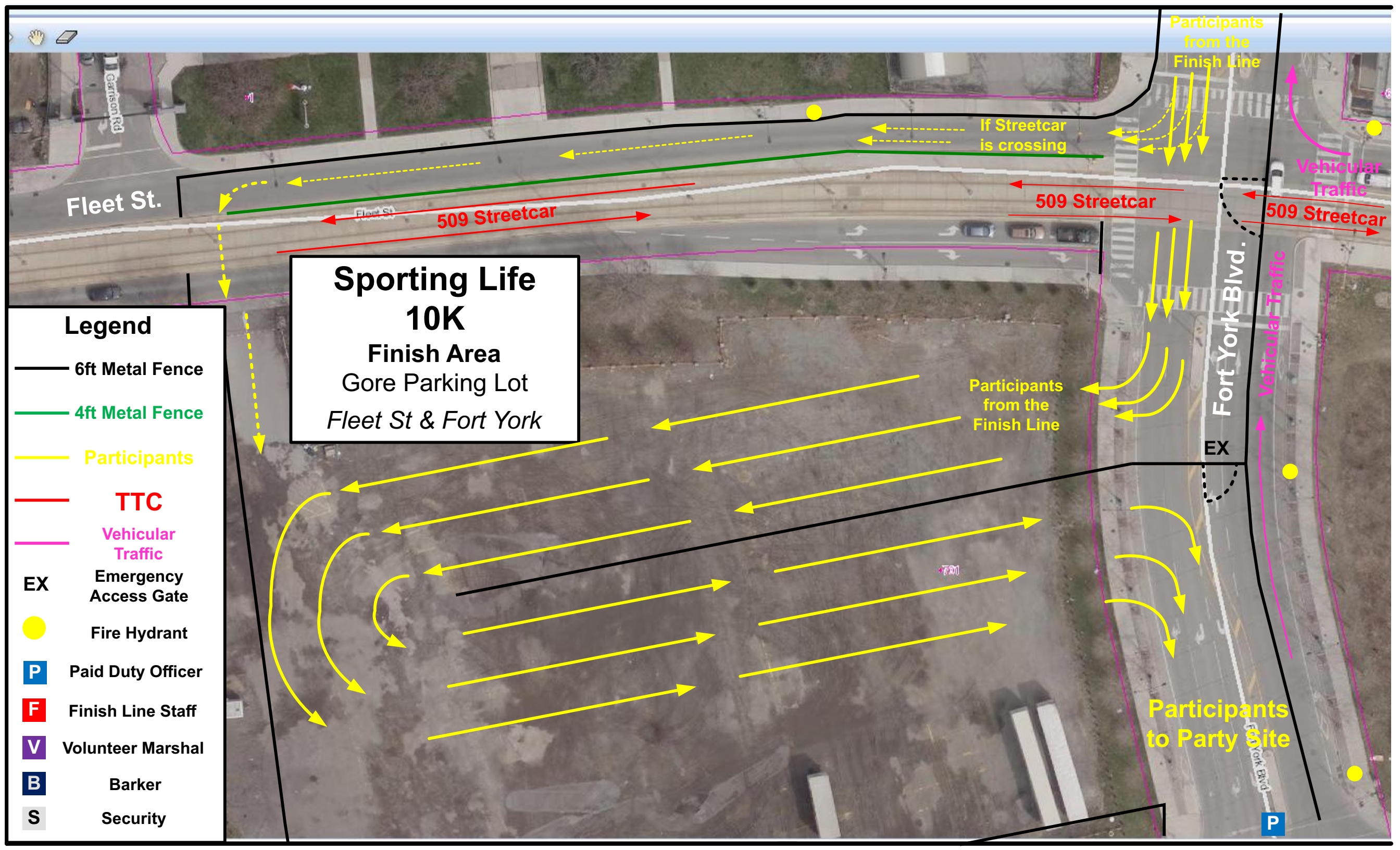
V Volunteer Marshal

S Security

R Route Marshal

● Fire Hydrant





Fleet St.

Sporting Life 10K

Finish Area
Gore Parking Lot
Fleet St & Fort York

Legend

6ft Metal Fence

4ft Metal Fence

Participants

TTC

Vehicular
Traffic

EX
Emergency
Access Gate

●
Fire Hydrant

P
Paid Duty Officer

F
Finish Line Staff

V
Volunteer Marshal

B
Barker

S
Security

If Streetcar
is crossing

509 Streetcar

Participants
from the
Finish Line

Vehicular
Traffic

509 Streetcar

Fort York Blvd.

EX

Participants
from the
Finish Line

Participants
to Party Site

P